

## 2012 SUMMER STUDY ABROAD FINANCIAL AID APPLICATION

### 1. DEADLINES/CHECKLIST:

- Feb. 15: Complete 2012-13 FAFSA on the web at [www.fafsa.gov](http://www.fafsa.gov).  
If selected for Verification, submit copy of signed & dated 2011 1040, all attachments & W2s.
- Feb. 15: Complete and submit Enrollment Status Form (emailed to you or available at our office).
- April 2: Submit a completed Study Abroad Financial Aid Application (both sides).
- April 2: Must have approval from Assoc. Dean Deming (all programs except S. Africa and Guatemala).
- April 2: Notify Student Financial Services (SFS) of acceptance to the study abroad program.
- Feb-April: Make a study abroad appointment with SFS to go over the process and any questions.
- May: Immediately submit your signed Award Letter when available, Stafford Master Promissory Note (if not signed previously) and alternative loan request if applying for alternative loan (such as the Graduate PLUS Loan).

**Complete your FAFSA by February 15 or you will miss the "on time" date and your Financial Aid Award Letter will be considerably delayed. You must also submit the Enrollment Status Form for attendance information.**

Our office will request a consortium agreement with the host school (program sponsor) once information from the first five items is received. A consortium agreement is *required* in order for you to receive any financial aid for the program. You will receive a revised award letter based on the consortium information (it typically changes the private loan eligibility amount).

**2. FINANCIAL AID AVAILABLE:** Your financial aid for the summer study abroad program will be based on your financial aid eligibility for the 2012-13 school year. The Stafford loan will be disbursed equally over three terms: summer, fall and spring. However, that lowers the Stafford loan disbursement amount available for the higher tuition costs of fall and spring terms. Please budget carefully!

Federal Direct Stafford Loan: One third of the maximum Stafford loan for summer term is available if enrolled half-time. However, you ***will not receive any funds until approximately 2-3 weeks into the summer session.*** **Federal Direct Stafford loan proceeds may not be released until after the start of your study abroad program.** The Business Office will request a refund check that will be mailed to the address indicated on this application. **You must cover all costs up front.**

Private Loan: If the study abroad program costs exceed the Stafford disbursement amount (\$6799), you may apply for a private loan and request a summer disbursement. Remember that **private loans require a credit check** and may require a co-signer. Private loans are disbursed fall & spring only, unless SFS approves an exception for the summer program.

### 3. AUTHORIZATION OF DISBURSEMENT AND CERTIFICATION OF SUMMER ABROAD

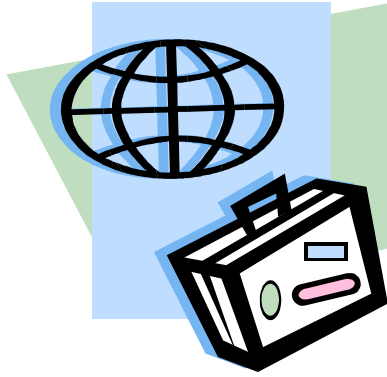
**ATTENDANCE:** You must complete the Authorization of Disbursement and Certification of Summer Abroad Attendance form on the Summer Study Abroad Financial Aid Application. Your proceeds will be mailed to the address indicated on that form. We suggest using a family member's U.S. address and providing them with a deposit slip. ***You are directly responsible for making payment arrangements and remitting your proceeds to the study abroad program. You must be enrolled at least half-time in order to receive financial aid.***

**4. IF YOUR PLANS CHANGE:** Contact us immediately in order to revise your financial aid award letter.

**5. RECEIVING AID FOR THE FOLLOWING TERM:** In order to receive aid for following terms, you must document that you have successfully completed the number of credits (at least half-time status) for which you received aid during the summer term. You must request that the host school forward a copy of your academic transcript to Seattle University School of Law after the end of your program. Your fall and/or spring aid may be held or withdrawn and/or summer aid may be returned if you did not maintain eligibility for the student loan you received. Also, if you owe an outstanding balance on your account with the host school, you will not receive aid for the fall term until you can document that the balance has been paid in full. Proceeds from your fall financial aid may not be used to pay an outstanding balance at the host school.

**6. QUESTIONS?** Contact SFS at 206.398.4250 or lawfa@seattleu.edu for an appointment or for more information.

**\*\*\* STUDY ABROAD APPLICATION MUST BE COMPLETED AND RETURNED \*\*\***



**2012 SUMMER STUDY ABROAD  
FINANCIAL AID APPLICATION and CERTIFICATION**

**Deadline April 2, 2012**

Name (Print): \_\_\_\_\_

Phone(s): \_\_\_\_\_

SU ID # or Social Security #: \_\_\_\_\_

Host Law School (in U.S.): \_\_\_\_\_

(if attending SU's South Africa or Guatemala programs, please list Seattle University)

Host School address: \_\_\_\_\_

Program/Country applying to: \_\_\_\_\_

Number of credits: \_\_\_\_\_ You must be enrolled at least half-time (3 credits during summer term) to receive financial aid.

Anticipated departure date: \_\_\_\_\_ \*\*Date session begins: \_\_\_\_\_ Date session ends: \_\_\_\_\_

Host School Financial Aid contact person\*: \_\_\_\_\_

(\*if attending SU's South Africa or Guatemala programs, you can leave this information blank\*)

Host School Financial Aid contact person phone number\*: \_\_\_\_\_

Host School Financial Aid contact person fax number\*: \_\_\_\_\_

(Note: If the study abroad program is less than 3 credits, it is considered less than half-time and therefore ineligible for financial aid except for a less than half-time private loan through particular private lenders – see SFS.)

\*\*If the session begins early, do not expect loan proceeds prior to the first week of June due to annual academic year software updates.

***Please complete both sides of this form!***

**2012 SUMMER STUDY ABROAD FINANCIAL AID APPLICATION and CERTIFICATION**  
**Deadline April 2, 2012**

**Authorization of Disbursement and Certification of Summer Study Abroad Attendance**

*I certify that I have read and understand the Checklist Information and certify the following points below:*

- I will be attending an approved Study Abroad program for summer term 2012 and understand I must be enrolled at least half-time to receive financial aid.
- If I fail to enroll in my Study Abroad program or enroll less than half-time status, I will immediately notify Seattle University School of Law. I understand that all financial aid must be returned in full immediately to the lenders. I will return any student loan checks, without endorsing or otherwise negotiating them, to the Law School Student Financial Services office. If I negotiate the student loan checks and fail to enroll in the study abroad program at least half-time, I agree to immediately return the full amount of the loan (including any fees I have been charged) to the lending institution for reimbursement of my account. Failure to do so will cancel my eligibility for future financial aid. Lenders will demand payment in full and if not provided will create a default status.
- I understand that my Direct Stafford loan will come in three equal disbursements for summer, fall and spring terms. I acknowledge that a supplementary source of funds will be necessary to meet tuition expenses for fall and spring.
- I understand I am expected to maintain satisfactory academic progress as stated in the standards for academic probation and dismissal in the Student Handbook.
- I will make payment arrangements directly with the host institution. Important! See #2, #5 on Checklist Form.

I authorize Seattle University School of Law Student Financial Services to release the information listed below to my student loan lending institution(s). I request that the institution disburse the summer term disbursement of my student loan to me in a single-payable check, in accordance with Federal Student Aid regulations, to the address below. We recommend providing a U. S. address (preferably a family member's), rather than one overseas.

**Signature:** \_\_\_\_\_ **Print Name:** \_\_\_\_\_ **Date:** \_\_\_\_\_

**Send summer term proceeds to: c/o:** \_\_\_\_\_

Street \_\_\_\_\_

City: \_\_\_\_\_ State: \_\_\_\_\_ Zip: \_\_\_\_\_ Country: \_\_\_\_\_

Your SU E-mail: \_\_\_\_\_

***Please complete both sides of this form!***